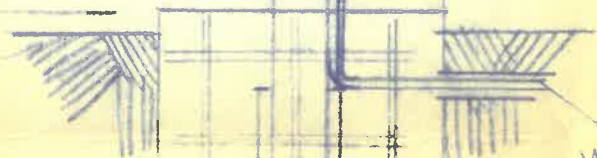


rotator



24'

8"



1250 Independence Dr  
 Conduit WITH LB IN POLE

120V. 11-2 AMPS.

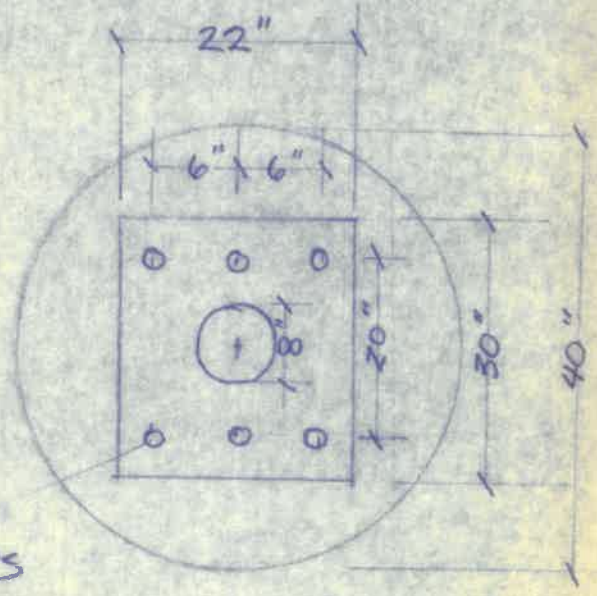
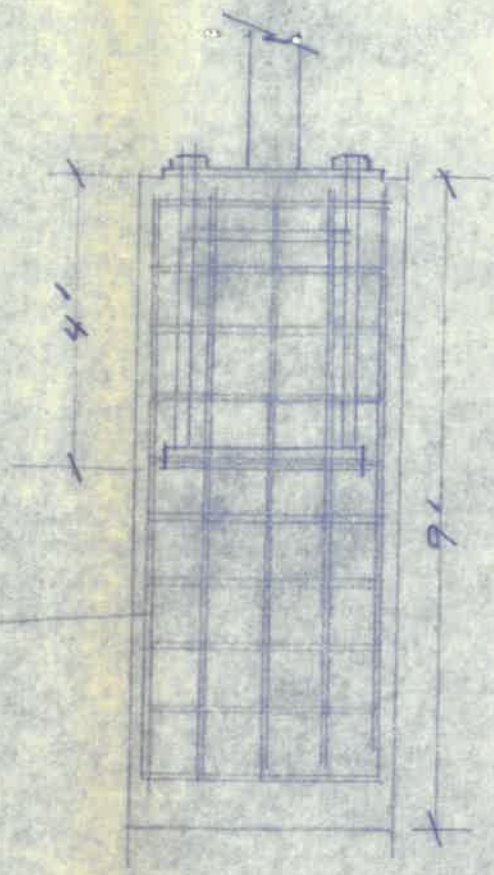
CITY OF NAPOLEON  
 BUILDING DEPT.

Plan Approval

By *fel* Date 8-16-7

40"  
 DIAM.

SIGNS DESIGNED  
 100MPH WIND



1 3/4 BOLTS

CITY OF NAPOLEON  
BUILDING DEPT.

Plan Approval

By *ROL* Date 8-16